

U.S. Equity Shareholder Yield

FOURTH QUARTER 2022

U.S. Equity Shareholder Yield seeks superior total and risk-adjusted returns with high dividend income and by investing in a diversified portfolio of U.S. companies with strong and growing free cash flow, which typically results in below-market volatility

Key Components of the U.S. Equity Shareholder Yield Strategy

A diversified core holding offering lower-than-market volatility, low beta, and drawdown protection, which creates strong annualized returns through a portfolio of companies generating:

- sustainable cash returns in the form of shareholder yield: dividends, share buybacks, and debt reduction
- persistent free-cash-flow growth

Continued shareholder distributions and capital growth through utilizing fundamental research to determine potential growth of distributions

Portfolio construction framework designed to minimize risk in achieving portfolio objectives

Emphasis on capital allocation and free cash flow typically offers low correlation with traditional equity styles

Investment Philosophy

Epoch believes that the best predictors of long-term shareholder return are growth in free cash flow and management's skill in allocating that cash.

We prefer cash flow to earnings for three reasons. First, cash flows are more reliable than reported earnings because they are harder to manipulate under accounting rules. Second, for innovative businesses which derive much of their economic value from intangible assets,

reported earnings have become increasingly less relevant as a measure of value generation compared to cash flows. Third, businesses which appear to generate reported earnings but not cash flows are more likely to run into financial distress.

Capital allocation matters because decisions on how to allocate cash flows—whether to reinvest in order to grow a company, or to return capital to shareholders—can create or destroy long-term shareholder value.

Strategy Approach and Investment Process

The U.S. Equity Shareholder Yield strategy pursues attractive total returns with an above-average level of income by investing in a diversified portfolio of U.S.-domiciled companies with strong and growing free cash flow. We pursue this through a portfolio of securities with a cash dividend yield of 3%, an additional return from share buy-backs and debt reduction of 2%, and operating cash flow growth of 3%. The portfolio generally holds between 75 and 120 stocks from U.S. equity markets, with risk controls to diversify the sources of shareholder yield and reduce volatility.

The investment process begins with a universe of approximately 3,000–4,000 U.S. equity securities. We deploy a proprietary quantitative screen that helps narrow the universe to an opportunity set of 150–250 stocks that meet the basic criteria for the strategy. We screen for items including a minimum current recurring cash dividend yield of greater than 2%, consistent dividend growth, operating cash flow coverage of the dividend, and minimum market capitalization with sufficient trading liquidity. This screen serves as an aid in identifying companies worthy of further research and allows our analysts to dive more deeply into the fundamentals of a smaller set of potential investments.

Stocks that have been identified as potential investments are subjected to rigorous bottom-up fundamental analysis, which includes an evaluation of the business, financial strength, capital allocation policy, quality of management, as well as external factors, to select stocks for inclusion in the portfolio. Each company we analyze is subject to an extensive review of historical performance, as well as a detailed two to three-year forecast of key operating and financial metrics. We are not looking for mispriced securities, but rather companies where we have a high degree of confidence that we will collect a growing stream of shareholder yield. We perform sensitivity analysis around the key drivers of cash flow and management's allocation of it over a two- to three-year horizon to develop an expected shareholder yield and our confidence level that the company will meet our expectations. Both the screen and the fundamental analysis seek to identify companies that can produce excess cash flows and whose managements are committed to delivering shareholder yield by paying above-average and growing dividends, buying back shares and/or paying down debt without taking undue risks.

All members of the investment team, including the portfolio managers, conduct fundamental research for the strategy. Investment ideas are discussed during formal and informal team meetings. Analysts are responsible for developing and presenting an investment thesis, and it is up to the portfolio manager to



determine, within the strategy's portfolio construction process and risk controls, the names to include and their weights in the portfolio. Stocks are generally held as long as they continue to produce the shareholder yield characteristics we seek. Positions may be sold due to changes in a company's fundamentals or its capital allocation policy. We may also exit or trim a position if price appreciation has exceeded growth in the dividend to such a degree that the dividend yield is no longer considered constructive in reaching our overall portfolio objectives.

Risk Management

We seek to constrain the extent to which any one security could compromise the portfolio's ability to deliver our goals in terms of yield or growth in underlying cash flows. In other words, if a security has a very high yield, we will assign it a relatively low weighting so that the portfolio is not dependent upon it to achieve its dividend yield objective. No one security can contribute more than 3% to the overall yield of the strategy, and no one security can contribute more than 5% to the overall cash-flow growth of the strategy. Individual positions are limited to 2.5% of the portfolio and sectors are generally limited to 25%.

Risk management is integrated throughout the process with a focus on avoiding unintended risks—Epoch's Chief Risk Officer serves as a co-portfolio manager on the strategy, actively monitors portfolio risk exposures, and formally communicates them to other portfolio managers on a regular basis.

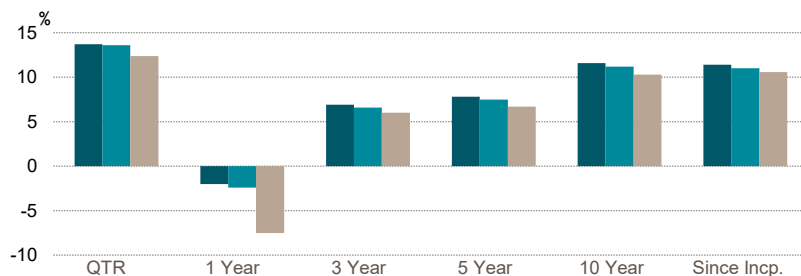
Portfolio Management Team

Industry Experience

Kera Van Valen, CFA	21 Years
John Tobin, PhD, CFA	41 years
Mike Welhoelter, CFA	36 years
Bill Priest, CFA	57 years

Supported by a team of analysts with an average of 20 years experience

U.S. EQUITY SHAREHOLDER YIELD



	2022	2021	2020	2019	2018	2017	2016	2015	2014	2013	2012
Portfolio (Gross)	-2.0	23.7	0.8	25.0	-4.6	17.8	15.6	-1.3	16.1	31.6	3.5
Portfolio (Net)	-2.4	23.3	0.5	24.6	-4.9	17.5	15.3	-1.6	15.8	31.2	3.2
Russell 1000 Value	-7.5	25.2	2.8	26.5	-8.3	13.7	17.3	-3.8	13.5	32.5	8.1

	2022	2021	2020	2019	2018	2017	2016	2015	2014	2013	2012
Portfolio (Gross)	-2.0	23.7	0.8	25.0	-4.6	17.8	15.6	-1.3	16.1	31.6	3.5
Portfolio (Net)	-2.4	23.3	0.5	24.6	-4.9	17.5	15.3	-1.6	15.8	31.2	3.2
Russell 1000 Value	-7.5	25.2	2.8	26.5	-8.3	13.7	17.3	-3.8	13.5	32.5	8.1

Results for 2012 represent partial period performance from July 1, 2012 through December 31, 2012.

SECTOR WEIGHTS

	Portfolio %
Financials	17.3
Health Care	14.2
Information Technology	12.1
Industrials	11.6
Consumer Staples	9.1
Utilities	8.7
Energy	6.6
Materials	5.9
Consumer Discretionary	4.9
Real Estate	4.0
Communication Services	3.5
Cash	2.1
Total	100.0

THREE YEAR RISK METRICS

Portfolio vs. Russell 1000 Value	
Info Ratio	0.25
Alpha	1.41
Beta	0.88
R ²	0.98
Upside Capture	91.2
Downside Capture	91.1

ADDITIONAL INFORMATION

Composite Inception	June 30, 2012
Assets	\$2,352.6 million
Availability	Minimum
Separate account	\$25 million
Mutual Fund	
Mainstay Epoch U.S. Equity Yield Fund	
Ticker: EPLCX (I Share)	\$5 million
UCITS	
Epoch U.S. Equity Shareholder Yield Fund	
Class A	\$1 million
Class B	\$100 million

CHARACTERISTICS

	Portfolio
Standard Deviation (3yr) (%)	19.0
Sharpe Ratio (3yr)	0.33
Dividend Yield (%)	3.3
Weighted Avg Mkt Cap (\$M)	167,133
Weighted Med Mkt Cap (\$M)	83,540
Number of Equity Positions	96
12 Month Turnover (%)	16.3

5 LARGEST HOLDINGS

	Portfolio %
AbbVie, Inc.	2.4
Chevron Corporation	2.2
MetLife, Inc.	2.2
UnitedHealth Group Incorporate	2.1
JPMorgan Chase & Co.	2.0
Total	10.9

All data as of December 31, 2022 unless otherwise noted. Source: FactSet Research Systems, Inc.; Frank Russell Company ("Russell"). Totals may not add due to rounding. The inception date of the strategy is June 30, 2012. Performance for the most recent quarter is preliminary and subject to change. The risk statistics are shown for informational purposes only and are not indicative of future results. Past performance is no guarantee of future results. Valuations are computed and performance is reported in U.S. dollars. Composite returns are presented gross and net of management fees and include the reinvestment of all income. Gross-of-fees returns are presented before management fees but after all trading expenses. Net performance reflects the gross-of-fees return reduced by the investment management fee and performance-based fee (where applicable) incurred. Effective October 2012, net performance is calculated by deducting the actual investment management fee incurred by each portfolio in the composite. Prior to October 2012, net-of-fee returns reflect the deduction of the highest annual management fee, calculated on a monthly basis. Returns include the effect of foreign currency exchange rates. The statements expressed herein are informed opinions, are as of the date noted, and are subject to change at any time based on market or other conditions. International investments involve special risks including currency fluctuation, long liquidity and different accounting methods and economical and political systems. Securities of smaller companies tend to be more volatile and less liquid than that of large companies. Information about indices allows for the comparison of an investment strategy's results to that of a widely recognized broad market index. There is no representation that such index is an appropriate benchmark for such comparison. Results for an index do not reflect trading commissions and costs. Index volatility may be materially different from a strategy's volatility and portfolio holdings may differ significantly from the securities comprising an index. This information is intended to highlight issues and not to be comprehensive or to provide advice only. Any reproduction, modification, distribution, transmission or republication of the information, in part or in full, is prohibited.



Important Disclosures

For institutional investors only. The information contained herein is distributed for informational purposes only and should not be considered investment advice or a recommendation of any particular security, strategy or investment product. The information is distributed with the understanding that the recipient has sufficient knowledge and experience to be able to understand and make their own evaluation of the proposals and services described herein as well as any risks associated with such proposal or services. Nothing in this presentation constitutes legal, tax, or accounting advice. Information contained herein has been obtained from sources believed to be reliable, but not guaranteed. Certain information provided herein is based on third-party sources, and although believed to be accurate, has not been independently verified. Except as otherwise specified herein, Epoch Investment Partners, Inc. ("Epoch") is the source of all information contained in this document. Epoch assumes no liability for errors and omissions in the information contained herein. Epoch believes the information contained herein is accurate as of the date produced and submitted, but is subject to change. No assurance is made as to its continued accuracy after such date and Epoch has no obligation to any recipient of this document to update any of the information provided herein.

No portion of this material may be copied, reproduced, republished or distributed in any way without the express written consent of Epoch.

Past Performance: Any performance information referenced represents past performance and is not indicative of future returns. There is no guarantee that the investment objectives will be achieved.

To the extent the material presented contains information about specific companies or securities, including whether they are profitable or not, it is being provided as a means of illustrating our investment thesis. Each security discussed has been selected solely for this purpose and has not been selected on the basis of performance or any performance-related criteria. Past references to specific companies or securities are not a complete list of securities selected for clients and not all securities selected for clients in the past were profitable. The securities discussed herein may not represent an entire portfolio and, in the aggregate, may only represent a small percentage of clients' holdings. Clients' portfolios are actively managed and securities discussed may or may not be held in such portfolios at any given time.

Projected or Targeted Performance: Any projections, targets, or estimates in this presentation are forward-looking statements and are based on Epoch's research, analysis, and its capital markets assumptions. There can be no assurances that such projections, targets, or estimates will occur and the actual results may be materially different. Additional information about capital markets assumptions is available upon request. Other events which were not taken into account in formulating such projections, targets, or estimates may occur and may significantly affect the returns or performance of any accounts and/or funds managed by Epoch.

Non-US Jurisdictions:

This information is only intended for use in jurisdictions where its distribution or availability is consistent with local laws or regulations.

Australia: Epoch Investment Partners, Inc. (ABRN: 636409320) holds an Australian Financial Services Licence (AFS Licence No: 5308587). The information contained herein is intended for wholesale clients and investors only as defined in the Corporations Act of 2001.

United Kingdom: Epoch Investment Partners UK, LTD is authorised and regulated by the Financial Conduct Authority of the United Kingdom (Firm Reference Number: 715988)

South Africa: Epoch Investment Partners, Inc. is a licensed Financial Services Provider (license number 46621) with the Financial Sector Conduct Authority.

